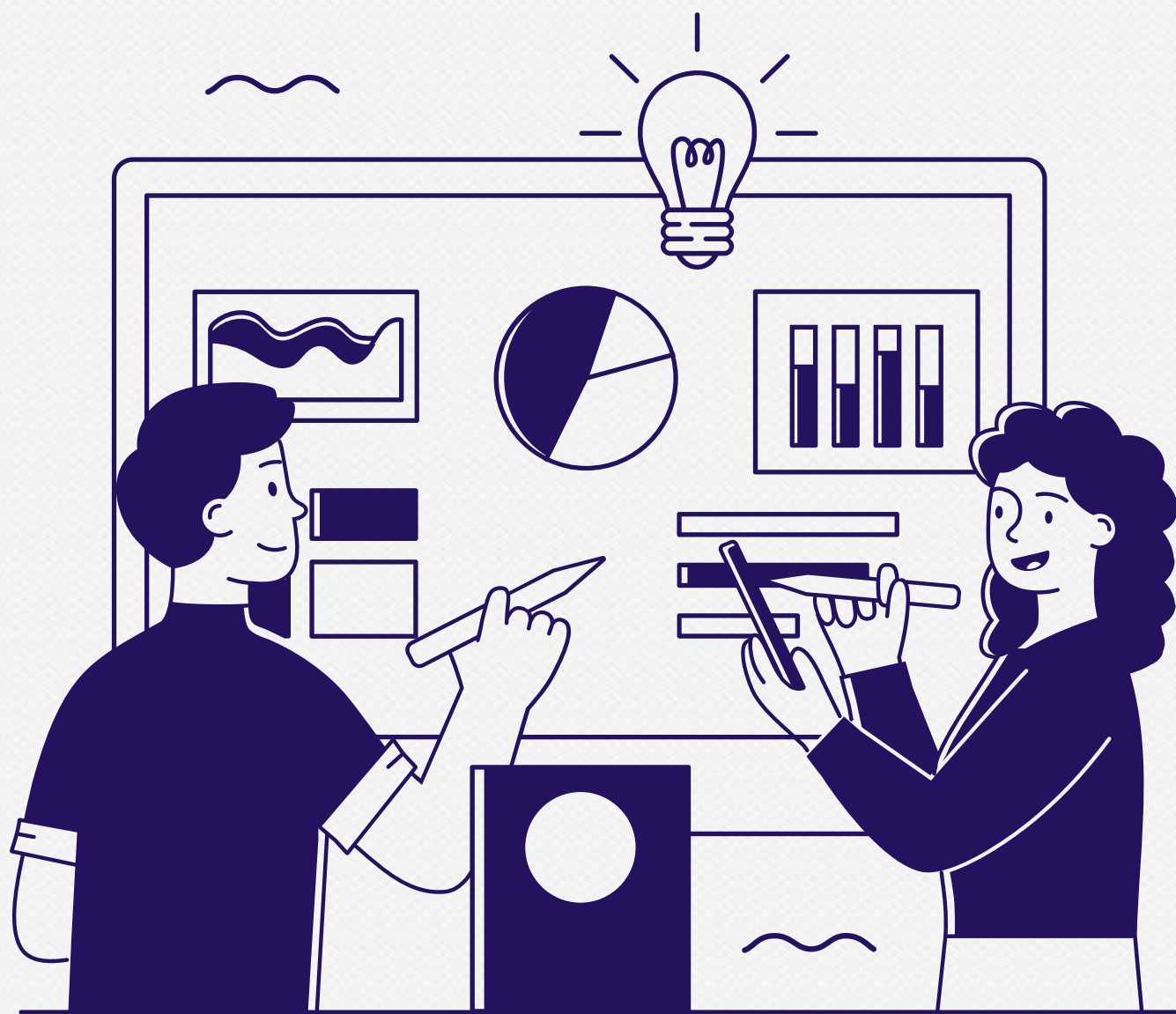


# Southend-on-Sea Community Safety Partnership Strategy

2022 to 2025



# Contents

3

Forward

4

The Southend  
Community Safety  
Partnership Board

5

What did our  
community say?

6

Essex Police Data

7

Our four priorities

8

Priority 1:  
Safe and  
Confident  
Communities

10

Priority 2:  
Reducing Violence  
Against Women  
and Girls

12

Priority 3:  
Reducing Hate  
Crime

14

Priority 4:  
Reducing Knife  
Enabled Serious  
Violence

16

How will we know  
we are on track?

17

Supporting  
Strategies and  
Plans

# Foreword

The Community Safety Partnership (CSP) is pleased to present our Community Safety Partnership Strategy (CSPS) for 2022-2025. It sets out our priorities for reducing crime and disorder and protecting vulnerable people across Southend over the coming three years.

Through working together, the CSP has achieved many successes in reducing crime and disorder, protecting those who are vulnerable and making Southend safe and secure for residents, businesses and visitors. This has been done under the difficult circumstances of the coronavirus pandemic, which has had significant and wide-ranging impacts across the City. We are proud of these achievements, but know that more needs to be done to make Southend safer.

As a CSP, we recognise that the challenges facing our children, young adults, families and businesses have evolved, and that they continue to do so; the strategy sets out the priorities and aims for keeping Southend City safe. It brings together statutory and non-statutory partners, with the aim of building safe and secure communities, thereby promoting public confidence in the CSP, and ensuring that victims are satisfied with the service and support they receive.

The commitments set out in the strategy build on existing partnerships and seek to develop them in new and ambitious ways, and include greater collaboration between the partnership as a whole. Through enhanced collegiate working, we will maximise benefits, and achieve progress on our priorities during the lifetime of this strategy, all of which will bring about real change for residents and visitors to the city of Southend.

Finally, it is important to reflect upon the tragic circumstances that led to Southend being granted city status; indeed, the tragic murder of Sir David Amess, and the equally abhorrent murders of Sarah Everard, Balvinder Gahir, Bibaa Henry, Julia James, Khloemae Loy, Nicole Smallman and Libby Squire, have forced government and CSPs alike to assign priorities committed to reduce knife enabled serious violence, violence against women and girls, as well as hate crimes.

With the above in mind, we will focus our efforts and resources on four strategic priorities, and these are based upon national and regional priorities, an assessment of crime and disorder issues across the City, a reflection of community views and insights, as well as the six high level ambitions set out in Southend 2050 which is the city's shared ambition for the future. The CSPS makes a particular specific contribution to themes: 1 (Pride and Joy), 2 (Safe and Well) and 4 (Opportunity and Prosperity) within Southend 2050, and the strategic priorities are as follows:

**Priority One** - Safe and Confident Communities; **Priority Two** - Reducing Violence Against Women and Girls; **Priority Three** - Reducing Hate Crime and **Priority Four** - Reducing Knife Enabled Serious Violence.

Chief Superintendent Waheed Khan and Director of Public Protection Joanne Stowell  
Co - Chairs of the Community Safety Partnership Board

# The Southend Community Safety Partnership Board

The Southend Community Safety Partnership Board (CSPB), comprises of statutory and non-statutory partners. It brings the organisations together so that they can cooperate at a strategic level, to improve community safety outcomes for the residents of Southend.

The Board has the responsibility for developing a strategy that delivers the priorities determined by the Essex Police, the results of a Strategic Impact Assessment, as well as those that are important to our residents.

## Our Partners

Southend City Council	Southend City Council Cabinet Member for Public Protection
Essex Police	Essex County Fire and Rescue
National Probation	Essex Ambulance Service
South Essex Homes	Department of Work and Pensions
Southend Association Voluntary Services (SAVS)	Southend Clinical Commissioning Group

## We chose our priorities by:

- Undertaking a Strategic Intelligence Assessment (SIA), taking into consideration Essex Police Fire and Crime Commissioner's Police and Crime Plan priorities, Southend 2050 and CSP stakeholders strategies (outlined on page 17);
- Completing a risk matrix with CSP Stakeholders, to understand threat, risk and harm, so providing a score against community safety issues which considered the following:
  - \*Impact against victim, community, public expectations and the environment.
  - \*Likelihood of a community safety issue occurring, examining frequency, volume and trends.
  - \*Organisational position, considering the impact of the issue on organisations and, if it is a national issue, \*the economic cost of an issue, \*whether the CSP has the capacity and capability to respond to the issue, and \*identifying any gaps;
- Taking the concerns of residents into account through analysis of the results of the Residential Survey, discussions held at Independent Advisory Groups (IAGs) and Local Community Meetings (LCMs) which highlighted issues that impact on communities quality of life.

# What did our residents say?

In 2021 residents provided insights of their local area, community interactions and resident behaviours

Percentage of residents that felt:



81%

Feel safe in their local area during the day



43%

Feel safe in their local area after dark



68%

Feel addressing crime and anti-social behaviour is a priority

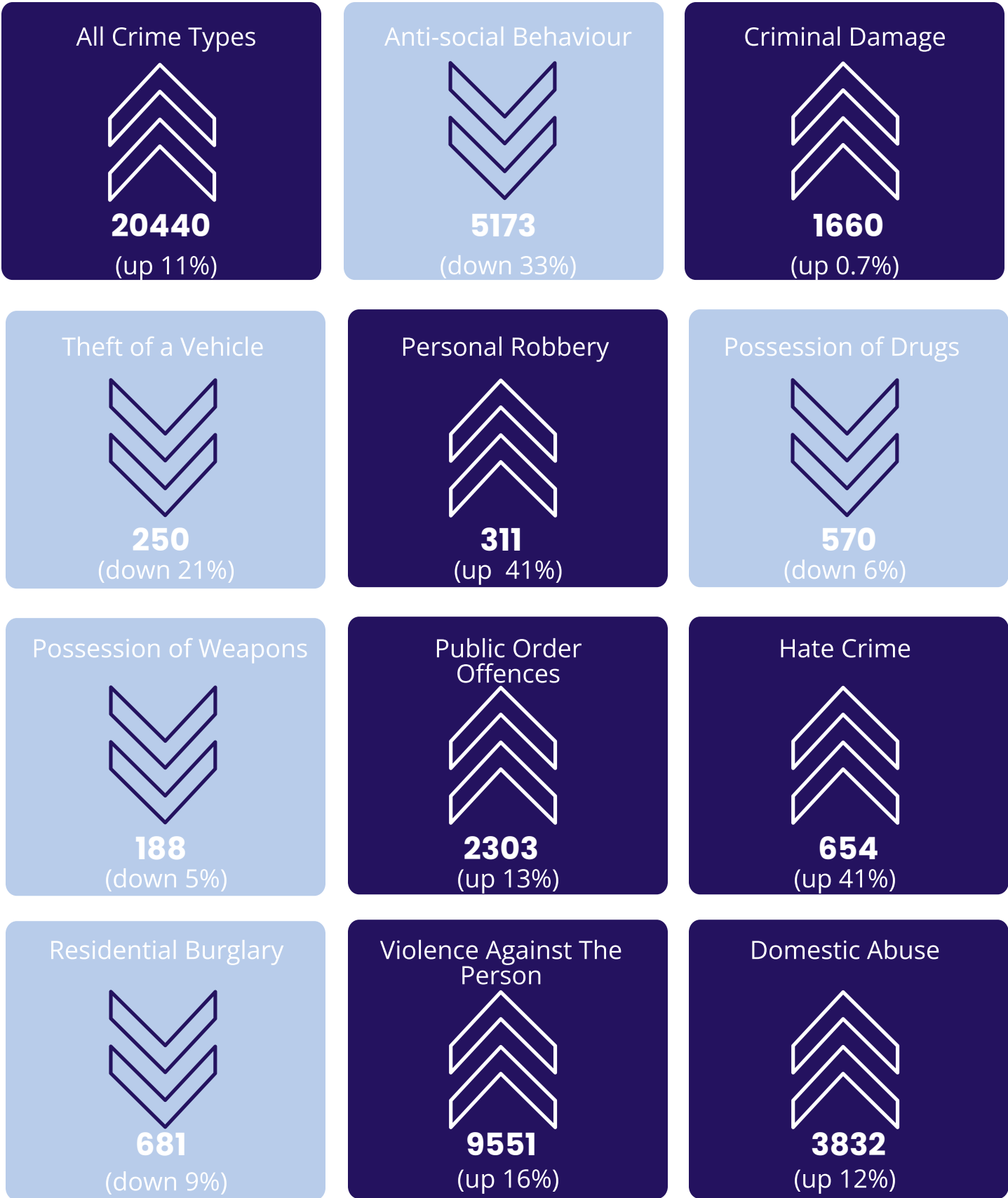


53%

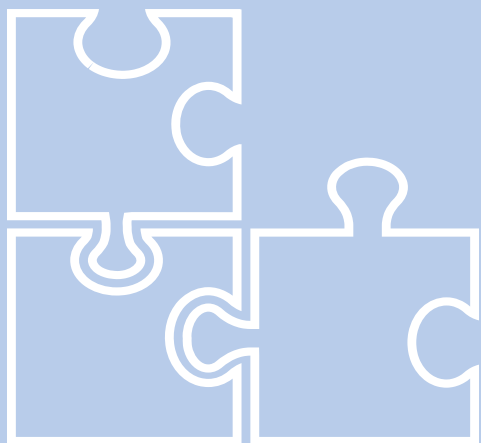
Of residents are confident using public transport

# Essex Police Reported Crime Data

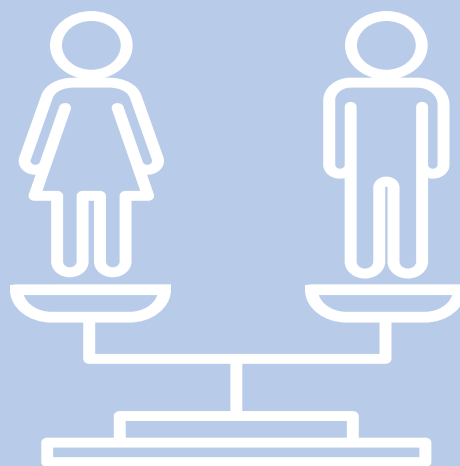
Showed us that between February 2021 and January 2022



# Our four priorities



Priority one: Safe and Confident Communities



Priority Two: Reducing Violence Against Women and Girls

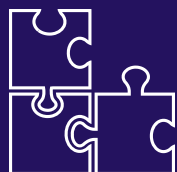


Priority Three: Reducing Hate Crime



Priority Four: Reducing Knife Enabled Serious Violence

Priorities are not ranked in any order. Each priority has associated delivery mechanisms with partnership strategies and plans to drive them forward. The priorities will be reviewed annually, to ensure that they are relevant, and will monitored periodically to determine progress. If priorities are changed in the future this document will be updated to reflect them.



# Priority One

## Safe and Confident Communities

This priority will tackle high volume crimes & anti-social issues across the City, as well as targeting resources on those areas that are highlighted as hot-spots, either through the highest levels of crimes reported, or through noted increases. Our aim will be to reduce crime, reduce ASB and improve the confidence of residents and provide reassurance.

### Our Aim

To achieve reductions in the following high volume crimes that are deemed by CSP Stakeholders, district data and Southend residents to be local priorities:

- Anti-social Behaviour
- Street based Personal Robbery

In addition, we will concentrate on enforcement of the Southend-on Sea and Leigh-on Sea Public Space Protection orders, and Hostile Vehicle Mitigation measures.

### What we will tackle

We will take a joint problem solving approach in respect of those crimes that affect our residents and businesses the most including:



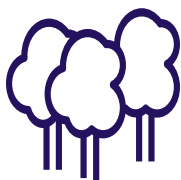
#### Anti-social Behaviour

Managing high volume ASB associated crimes within problematic areas across the City. Utilising established operation models where appropriate, including Operation Union, Heatwave & Jorvik.



#### Street Based Personal Robbery

Reducing theft of property accomplished through force or threat in public spaces



#### Southend-on-Sea and Leigh-on-Sea Public Space Protection Orders (PSPO)

Enforcing against reoccurrence of prohibited activities



#### Hostile Vehicle Measures

Implementing a series of security measures to mitigate against the ability of vehicles to cause threat or harm within town centre and seafront area and provide safer pedestrian areas



## Priority 1: Safe and Confident Communities

# How we will do it

### Work in partnership



- Work collaboratively with stakeholders to identify, assess and tackle high volume crime issues, through a coordinated problem solving approach;
- Direct crime prevention activities towards the people and places that experience highest volumes of ASB, or to the issues that contribute most to the problems.
- Coordinate approaches and referrals through the Strategic Tasking Allocation Group (STAG), Community Operational Group (COG) and Tactical Tasking Coordination Group (TTCG);
- Provide victims with clear ways to report, keep them informed of their case progression, signpost access to support, give the opportunity to choose restorative approaches to tackling ASB where appropriate.
- Develop clear referral pathways, and publish these on the Southend CSP website and partners media outlets.



### Intelligence led action

- Use data, analytical tools and partnership tasking groups such as: TTCG, CAG, STAG and COG to identify crime trends and hotspots.
- Use this intelligence to track and respond to local crime and ASB trends in real time, and provide local input to develop appropriate responses to City concerns.
- Development intelligence packages to assist with targeting of resources appropriately and to evaluate the success of initiatives.



### ASB Case Reviews (Community Triggers)

- Develop guidance on the Community Trigger and display via stakeholders media outlets and the CSP web page.
- Encourage partners to inform victims of ASB of the right to initiate the community trigger;
- Provide full case reviews for all cases highlighted by the Community Trigger.



### Legislation

- By using and applying the various Acts available to deal with crime, disorder and ASB, and by ensuring all available remedies are considered;
- Ensuring that all enforcement will be subject to a balanced approach involving support and treatment from partner services and enforcement where necessary.



### CCTV

Through ensuring the effective use of public space CCTV on targeted areas as determined by intelligence, and the investment in a CCTV upgrade.



## Priority Two

# Reducing Violence Against Women and Girls

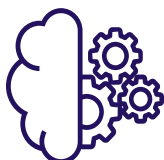
Violence against women and girls is a high harm crime. Southend CSP is committed to preventing all forms of gender-based violence and addressing it wherever and however it occurs. However, the CSP recognises that a significant number of men and boys also experience violent and abusive crimes, and these are captured within the cross-government Violence Against Women and Girls strategy.

### Our Aim

- Increase public safety including night time economy
- Improve service provision for those affected
- Target perpetrators

### What we will tackle

We will take a joint problem solving approach to better protect those experiencing violent and abusive crimes, taking the Prepare, Prevent, Pursue and Protect approach:



#### Prepare

Ensure that Intelligence between agencies is shared appropriately and effectively



#### Prevent

Raise awareness through partnership campaigns, provide education to children and young people, and provide subject matter training to statutory and non-statutory partners.



#### Pursue

Use all tools and powers as provided by anti-social behaviour legislation, to keep women safe in public spaces, provide perpetrator interventions and produce robust files to support successful prosecutions.



#### Protect

Work to ensure that Southend residents have access to the right support, helping them to be safe, feel safe and become free from violence and abuse.

## Priority 2: Reducing Violence Against Women and Girls

# How we will do it



### Prevention

- Increasing knowledge and understanding across communities and stakeholders through: training, events, and communication campaigns;
- Complete a full needs assessment to understand the local picture;
- Promote Street Safe to Southend residents.
- Use evidence based education and interventions that promote healthy relationships.



### Support Victims/Survivors

- Developing a joined up approach with all domestic abuse services working together, aware of what each service can offer, and providing a clear referral pathway;
- Supporting victims through Multi Agency Risk Assessment Conference (MARAC), judiciary processes and implement any learning points from Domestic Homicide Reviews.



### Legislation

- Working to ensure that perpetrators of violence against women and girls/domestic abuse are held accountable according to the law, and are provided with assistance to change their abusive behaviour, in order to prevent them from causing harm or violence to their current, past or future partners;
- Reduce re-offending rates of High Harm offenders by working with High Operation Shield (run by the Domestic Abuse Investigation Team), to ensure that the highest risk domestic offenders are proactively targeted, with applied problem solving to prevent their offending.



### Night Time Economy (NTE)

- Working collaboratively with partners to prevent and reduce sexual harm on the NTE (Operation Gerberra), including understanding the specific needs of women who sell sex on the street, and further recognise that street prostitution can be used as a means of adult sexual exploitation and a form of violence against women and girls.
- Retaining Purple Flag status, this status rewards vibrant, diverse and safe night time economy city centres. The quality mark is the equivalent of Blue Flags for beaches and Green Flags for parks.



## Priority Three

### Reducing Hate Crime

This priority will tackle Hate Crime across the City. Hate crime is a high harm crime and is historically underreported; our aim is to improve our residents knowledge of what a hate crime is, increase access to reporting centres/ambassadors, and to provide confidence and reassurance to victims and communities.

#### Our Aim

To improve reporting of hate crime and to reduce repeat victimisation of hate crime:

- Increase the reporting of hate crime where it occurs to gain a true picture;
- Reduce repeat victimisation
- Improve service delivery

#### What we will tackle

We will take a joint problem solving approach to protect residents and visitors from hate crime, make sure victims receive better support and strengthen the work to prevent people from being targeted.



#### Increase Reporting of Hate Crime Where it Occurs

Ensure victims and communities are aware of what hate crime is, how and where it can be reported.



#### Reduce repeat victimisation

By understanding offenders behaviours and supporting victims



#### Improve service delivery

Ensure the robustness of all cases going to prosecutions, using these cases as best practice examples.

## Priority 3: Reducing Hate Crime

# How we will do it

### Intelligence and Evidence



- Understanding the profile of hate crime offenders, what works to address causes and the impacts on victims and communities;
- Using data to develop approaches of working with offenders, offering appropriate interventions, and using metrics to monitor service delivery;
- Working with Safer Essex and Essex Strategic Hate Crime Board to identify any learning and areas of development.

### Education and Communication



- Engaging with primary and secondary schools, offering hate crime educational resources through Fire and Rescue Services;
- Engage with faith centres and local community groups regarding hate crime;
- Developing and promoting partnership hate crime awareness materials and campaigns;
- Ensuring community groups are aware of funding opportunities, and of best practice in applying, to maximise funding;
- Promoting hate crime referrals to Restorative Justice within Essex;
- Having Hate Crime as a standing agenda Item at Prevent Board

### Training and Support



- Developing and continuously working with and supporting Hate Crime Ambassadors, and Hate Incident Reporting Centres;
- Ensuring Hate Crime Ambassador training is available to statutory and non-statutory partners including those that work in the NTE



## Priority Four

# Reducing Knife Enabled Serious Violence

This priority is aimed to work with Southend CSP stakeholders to help prevent and deter individuals and groups from committing acts of serious violence, and of carrying/using knives. Knife crime is a high harm crime, and is defined as an offence where a knife/blade is used or threatened.

### Our Aim

- Decrease the number of knife crime assaults and weapons carried across Southend
- Reduce non-domestic knife crime with injury affecting 15-34 year olds as recorded in NHS admission data
- Prevent children & young person's becoming involved in serious violence

### What we will tackle

We will take a joint problem solving approach in respect of tackling knife crime and serious violence across the city.



#### Provide support and opportunities

Ensuring children and young people are supported and safeguarded through the provision of varied education, training and diversion programmes.



#### Stakeholder engagement and collaboration

Building upon current relationships with stakeholders and communities to ensure a coordinated approach to knife crime



#### High harm public spaces

Creating feeling of safety within high harm outdoor public spaces by improving local environment.



## Priority 4: Reducing Knife Enabled Serious Violence

# How we will do it



### Partnership

- Developing a Southend multi-agency Knife Crime Reduction Action Matrix (KCRAM), outlining and tracking the actions stakeholders take to address knife crime across the City.



### Intelligence led approach

- Developing performance, tactical and strategic data intelligence products using: ISTV, wider public health data, social media intelligence, local drug market use, county line analysis, ASB and any other relevant data from stakeholders relating to knife crime and serious violence;
- Delivering the the new Serious Violence Duty by working in collaboration with stakeholders to prevent and reduce serious violence, via a violence strategy and needs assessment;
- Use all available resources and tools to target problematic areas, and address high risk offenders, including using a targeted approach to tackle misuse of substance and alcohol;
- Enforcing the Public Space Protection Order effectively.



### Young Persons

- Placing communities and young people at heart of change, developing immediate and long term solutions, ensuring a multi-agency response to those at risk of or involved in violence;
- Ensuring that young people feel supported and motivated through the provision of varied education, training, and inclusive employment opportunities;
- Providing alternative education provision that seeks to reduce school exclusions, create links with local arts and culture groups, and improve signposting to diversionary activities;
- Raising awareness of the various support and intervention services that are available to those in need, in particular for individuals who have been identified as being at risk of offending or re-offending, or those who may be vulnerable to criminal exploitation (such as county lines);
- Aligning and connecting workstreams pertaining to looked after children, missing persons, children in need and public health/mental health plans and campaigns;
- Developing targeted community engagement programmes that will include detached youth work and street-based sessions with an aim to encourage people away from crime.

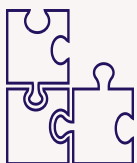


### Communication

- Continuing to develop the 'See The Signs' Campaign to address the awareness and disruption of gang activity.

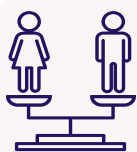
# How will we know we are on track?

## Priority one: Safe and Confident Communities



- Discussion of theme and updates will occur at quarterly Southend Community Safety Partnership Board Meetings and at 6 weekly Community Action Group meetings;
- The Community Operational Group (COG) will lead on effective monitoring and scrutiny of ASB service delivery, working in partnership to resolve on-going issues and report exceptions through to Community Action group and Southend Community Safety Partnership;
- Community Safety will attend Tactical Tasking coordination group every fortnight to provide input and will chair Southend Tasking Action Group (STAG) coordinating partnership approaches to on-going issues;
- This theme will be added to the Southend Community Safety Partnership performance framework.
- Data will be monitored to identify trends, emerging themes and effectiveness of initiatives;
- Overall reduction in the high volume crimes and ASB.

## Priority Two: Reducing Violence Against Women and Girls



- Discussion of theme and updates will occur at quarterly Southend Community Safety Partnership Board Meetings and at quarterly Southend Domestic Abuse Steering Group meetings;
- The Southend Domestic Abuse Steering Group will lead on effective monitoring and scrutiny of partner agencies in their service delivery, present findings and report exceptions to Southend Community Safety Partnership.
- Update the Southend Domestic Abuse Needs Assessment and Strategy.
- This theme will be added to the Southend Community Safety Partnership performance framework. Data will be monitored to identify trends, emerging themes and effectiveness of initiatives.
- Overall reduction in violence against women and girls

## Priority Three: Reducing Hate Crime



- Hate Crime Data Package will be used to monitor increase in reporting, and data will be shared with partners through the Community Action Group (CAG) and Independent Advisory Groups (IAG);
- Discussion of theme and updates will occur at quarterly Southend Community Safety Partnership Board Meetings and at 6 weekly Community Action Group Meetings;
- Referral data from Hate Crime Incident Reporting Centres, Victim Support and Restorative Justice will be monitored;
- This theme will be added to the Southend Community Safety Partnership performance framework;
- Data will be monitored to identify trends, emerging themes and effectiveness of initiatives.;
- Discussion of theme and updates will form part of Southend 2050 quarterly Outcome Success Measure Report.;
- Monitor Essex Police Victim Survey to satisfaction.

## Priority Four: Reducing Knife Enabled Serious Violence

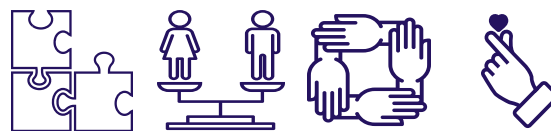


- Discussion of theme and updates will occur at quarterly Southend Community Safety Partnership Board Meetings;
- This theme will be added to the Southend Community Safety Partnership performance framework, and data will be monitored to identify trends, emerging themes and effectiveness of initiatives;
- Tracking partner outcomes once the matrix is produced;
- Overall reduction in knife enabled serious violence



# Supporting Strategies and Action Plans

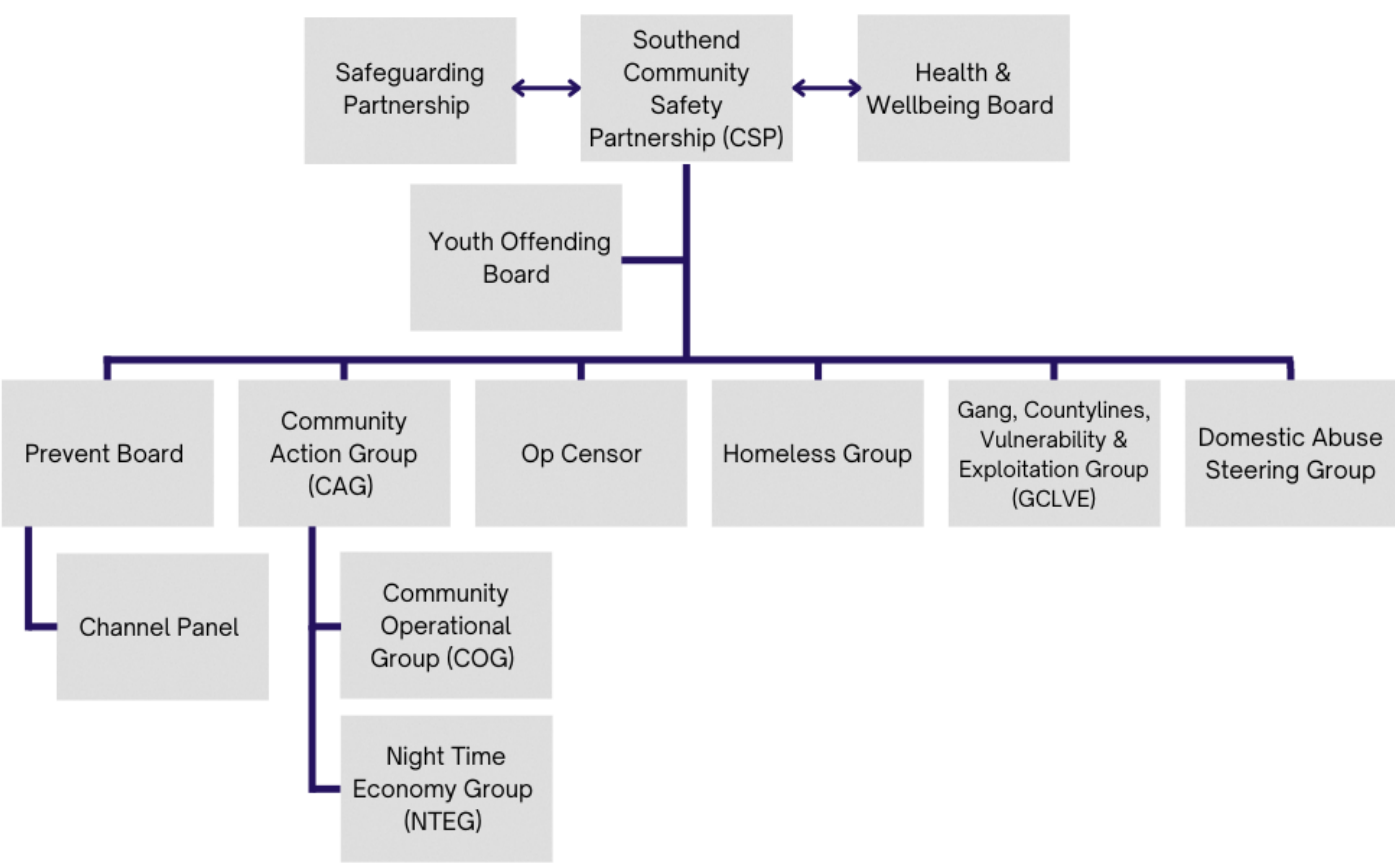
Helping to deliver this strategy



Strategies	Priority 1	Priority 2	Priority 3	Priority 4
Essex Fire & Rescue Prevention Strategy 2020-2024	✓		✓	
Essex Police Crime Prevention Strategy 2021-2025	✓	✓	✓	✓
Essex Police VAWG Strategy & Delivery Plan		✓		✓
Essex Strategic Hate Crime Prevention Partnership Strategy & Delivery Plan 2022-2025			✓	
Essex Violence & Vulnerability Partnership Priorities	✓	✓		✓
Health & Wellbeing Strategy 2021-2024	✓	✓	✓	✓
SET Domestic Abuse Strategy		✓		✓
SET Reducing Reoffending Strategy 2020-2024	✓	✓	✓	✓
Southend 2050	✓	✓	✓	✓
Southend Domestic Abuse Strategy		✓		
Southend Housing, Homelessness & Rough Sleeping Strategy 2018-2028	✓	✓		✓
Southend Street Prostitution Strategy 2022-2023	✓	✓		
Youth Justice Strategic Plan Southend Youth Offending Service	✓	✓	✓	✓

# Southend Community Safety Partnership Structure

The chart below sets out Southend CSP Structure and priority groups





For more information contact:  
Community Safety Unit  
**Southend-on-Sea City Council**  
Civic Centre, Victoria Avenue,  
Southend-on-Sea SS2 6LR